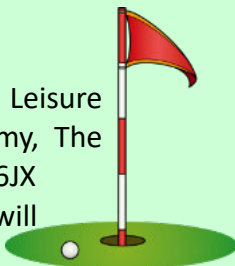


We now have a [Golf Group](#)!

There will be a monthly game at Leisure Lakes - Southport Golf Academy, The Gravel, Mere Brow, Preston PR4 6JX. The day and week of play will change each month, to allow as many players to take part in the 9 hole game.



The cost is £13 for a session and is to be paid directly to the Golf Academy shop on the day.

Numbers will be limited to 24 and the waiting list will be used to allow for cancellations.

Group members will be expected to bring their own clubs and equipment.

Riders from the [Motorcycle Group](#) having a cuppa at the appropriately named cafe 'The Gasket' at Appley Bridge.

More rides will be organised now the weather has improved.



The UK Government has released a [Gov.UK app](#) that allows you to chat about many government services.



[Yooks](#) are looking for new members to join our super friendly group. We need people who enjoy a good sing and can play along on the Ukulele.

Don't worry if you're not up to speed on the Uke we can help. Just contact us via the group page and give it a go.

Alan Philips

Members of [Local History 2](#) had an enjoyable and informative tour of the Liverpool Municipal Hotel this month, the second visit as the tour was so popular.



1 Which is the busiest of the London main line stations?

2 What was the last port of call for the Titanic before hitting an iceberg?

3 Of which railway company was Isambard Kingdom Brunel, Chief Engineer?

4 In which port was RMS Queen Elizabeth destroyed by fire in 1972?

5 Who was known as the Father of the Helicopter?

6 When it was launched in 1843, what was the largest passenger ship in the World?

7 Which aircraft launched in 1969 was the first to be called a "Jumbo Jet"?



8 As at 2024, which are the only two stations on the London underground system that start with the letter "I"?

9 What name is given to the traditional flat bottomed rowing boats used in Venice?

10 Who in 1930 became the first woman to fly solo from the UK to Australia?



11 In which year was the Eurotunnel train service officially opened?

12 In yachting, what is the difference between a sloop and a cutter?

13 By what name is the LNER Class A4 4418 locomotive better known?

14 In which country would you most likely see a junk sailing?

15 Which airline in 1979 was the first to introduce Business Class?



16 Which type of airplanes were mainly used in the famous "Dambusters Raid" in WW2?

17 On which ship did Shackleton and Scott complete their first journey to Antarctica?

18 Who was the first British monarch to travel by train?

19 Where was Britain's first lifeboat station established in 1776?

20 From which country does the airline TAP originate?

THIRD TOUR OF THE SPECTACULAR HILL DICKINSON STADIUM



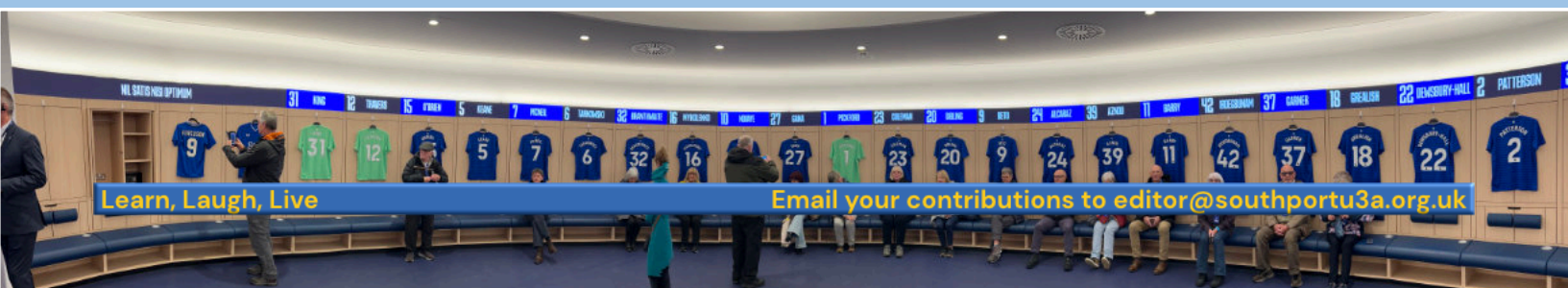
On the 13th January, 21 members of Out and About battled the elements of wind, rain and cold to visit the Hill Dickenson Stadium. This was the 3rd organised visit to Everton's new home by O&A.

We were not disappointed, from the moment we stepped from the bus into the stadium grounds, you couldn't help but be impressed. We arrived in plenty of time to have lunch in the huge café and to start to take in the views of the ground.

The tour started at 1pm with our two tour guides, Jamie and Danny who without doubt were staunch Everton fans. Their passion was obvious and their knowledge was amazing. They made the tour informative and at times hilarious. Well, they are Scousers!! Two hours later they were still entertaining us. Danny told us, this was his dream job and couldn't believe his luck, doing the tours for a living.

The tour was excellent and exceeded our expectations. This was an incredible achievement considering there was a significant number of Liverpool fans amongst us. To add to it, the sun even shone so that we could enjoy the outside elements of the tour.

There was even time for some retail therapy in the merchandise shop before catching the bus back to the station. We had a great time and would recommend this tour to everyone, regardless of who you support.



Local History 1 spent an interesting and informative morning, on a walk, with Dave Walshe, a local historian, finding out about the events and people who shaped the local area of Churchtown.

Our tour began near The Hesketh Arms, originally called The Black Bull, an important landmark within the village. The inn has long been associated with the influential Hesketh family, whose ownership of land in the area played a major role in the development of Churchtown and the surrounding district.

We then moved on to the site connected with William Sutton, the Bold Arms originally known as “The Griffin”. We learned about William Sutton and the Bold family connections that helped shape local history and land ownership in the region.

One of the highlights of the morning was our stop at St Cuthbert’s Church. This beautiful and historic church stands at the heart of the village since the 18th century. We admired its impressive architecture and heard stories of generations who worshipped there, as well as the churchyard’s links to many notable local families.

Nearby, we explored The Kirkgate Stocks, a reminder of earlier forms of local justice and punishment. Dave explained how the stocks were once used publicly to punish minor offenders, reflecting the social customs and discipline of earlier centuries.

Overall, the morning was both enjoyable and informative. Dave’s knowledge, enthusiasm, and storytelling brought the history of Churchtown vividly to life, helping us appreciate the village’s unique heritage and the many historical layers hidden within its streets and landmarks.



ANOTHER SUCCESSFUL ATKINSON TOUR FOR O&A



Twenty members of the Out & About group recently took part in the *Clues in the Architecture* tour at The Atkinson, gaining a fascinating insight into the history and design of the landmark building.

The tour explored the core structure, which opened in 1878 and was designed in the Neoclassical style, inspired by classical Greek and Roman architecture.

Members learned about its symmetry, Corinthian columns, pediment, and the carved decorative details that reflect the Victorian era's sense of civic pride. Particular attention was drawn to the architectural features representing the four seasons, as well as the statues standing beside the clock. Many members commented that they had never previously looked up to notice these striking details.

An overview of the building's development and architecture was given before the group examined features including the stone fireplace, ornate foyer, and majestic staircase — all hallmarks of Victorian municipal architecture. The tour also included visits to the theatre and studio, as well as the former bank offices, which are now part of The Atkinson and offer superb views over Lord Street.

At the end of the visit, members remarked on just how much there was to see and agreed that the experience had encouraged them all to “look up” more often.

It is planned to repeat this tour in the Autumn



SOUTHPORT U3A PICKLEBALL FESTIVAL

It was a great afternoon of Pickleball – enjoyed by all 28 players and congratulations to the group winners, Martyn Sayer, Neil Flemming, Chris Eyes and David Johnson. There are currently a few spaces in the [Pickleball group](#) so if you are interested then please do come along.



PICKLEBALL

We're looking for
NEW MEMBERS!

GREAT GAME. GREAT PEOPLE. GREAT FUN! ♥

5 TWO HOUR SESSIONS EACH WEEK

- MONDAY | 2pm
- TUESDAY | 2pm
- THURSDAY | 4pm
- FRIDAY | 10am
- FRIDAY | 2pm

PICKLEBALL – A GREAT GAME!

A FUN, FAST-PACED GAME THAT'S A MIX OF BADMINTON, TENNIS AND TABLE TENNIS.

GREAT SOCIAL SIDE!

- MEET LOTS OF LOVELY PEOPLE
- MAKE MANY NEW FRIENDS
- LAUGH, PLAY AND ENJOY!

VERY FRIENDLY GROUP

COME ALONG, GIVE IT A GO – YOU'LL LOVE IT!

ALL ABILITIES WELCOME – JUST BRING YOURSELF AND A SMILE! 😊

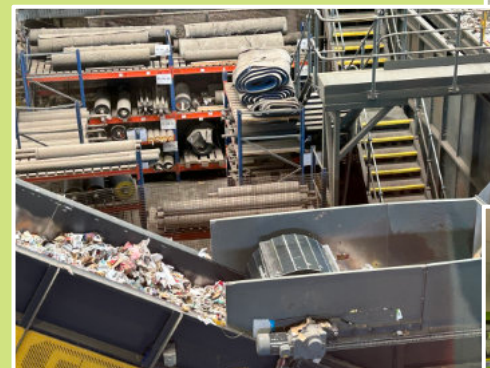
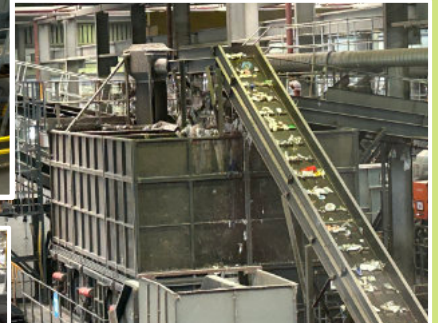
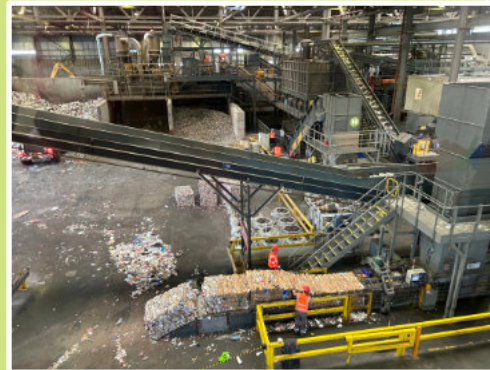
An **Out&About** group paid an excellent visit to the **Veolia Recycling Facility at Fazakerly**. Our guide, Rachel, did a terrific job of explaining this complex operation to us. She also simplified the rules on what can and cannot be recycled, explained what will happen when the new food recycling comes in to effect this year, and overall demystified much of the recycling myths.

She demonstrated her enthusiasm for the whole recycling business with an encyclopedic knowledge and answered a barrage of questions from us, with ease.

She next took us around the facility in a specially designed enclosed corridor, with lots of windows, which goes right around the building and is equipped with special CCTV cameras and screens so we could see what went in inside the actual machinery at each stage, while staying safe.

The whole tour was very well organised and slick and we then followed up with a very nice lunch at the local Marsdens pub.

One of our members - who admitted to believing that recycling was just a big con - said she was completely bowled over by the tour!!



WG4 Worsley Heritage Trail and Worsley Woods walk



On Thursday 14th May 2026, 17 walkers from [Walking Group 4](#) drove up to Worsley to walk the heritage trail and the nature reserve. The weather was good with some sun and no rain!

The group parked opposite the old courthouse, which was the start of the trail, then walked to the Packet house (tickets for boat) and onward to the Bridgewater canal.

The canal passenger service started from 1781 between Manchester and Worsley.



We then made our way to the Delph, at the start of the 46 miles of tunnels, dug to bring coal to Manchester by way of the special boats called 'Starvationers'. The canal was built by the Duke of Bridgewater and associates in 1765.

Next, we walked upwards into Worsley Woods nature reserve, lots of lovely trees and streams, before stopping at the cricket club for coffee and then joining the old railway track to Monton. We stopped at the lake overlooking Betfred's massive home (see Photo) and had lunch.



After lunch we returned along the railway track and under the M60 motorway to Monton, before a left turn onto the Bridgewater canal and back to Worsley.

We passed lots of new super houses on the banks of the canal and the old boathouse (1851), crossing the cobbled bridge to the village green.

Back in Worsley it was time for coffee and cake in the old Methodist chapel (1801).



The walk was 5.8 miles, height 200ft, time 3.5hrs.



GROUPS WITH VACANCIES

Group Name	Week In Month	Day	Time
Apple iPhone training	Third	Friday	PM
Art for Beginners 1	Every Other	Monday	PM
Art for Beginners 2	Every Other	Monday	PM
Art For Beginners 3	Every Other	Monday	PM
Art intermediate level	Every Other	Monday	PM
Astronomy	Fourth	Wednesday	PM
Badminton 1	Weekly	Tuesday	AM
Badminton 2	Weekly	Thursday	PM
Banjaxed Banjolele	Weekly	Friday	AM
Bird Watching	When Required	Various	AM
Book Club 4	First	Tuesday	PM
Bridge 2 - The Beginners	Weekly	Monday	AM
Campfire Guitars	Weekly	Wednesday	AM
Chair Based Exercise	Weekly	Friday	PM
Choir	Weekly	Wednesday	AM
Coach Trips	Various	Various	AM
Coffee Morning	Second + Fourth	Thursday	AM
Discussion	Second + Fourth	Friday	AM
Dynamic Drama	Weekly	Wednesday	PM
Emotional Freedom Technique	Second	Wednesday	PM
Family History (Genealogy)	When Required	Thursday	AM
French Book Club	Every 4 Weeks	Monday	PM
German Conversation	Fortnightly	Tuesday	PM
Gerryatric and the Pacemakers	Weekly	Thursday	AM
Guitar 2	Weekly	Monday	AM
Italian Conversation 1	Fortnightly	Monday	AM
Jazz	Second	Monday	PM
Joy of Writing	Second + Fourth	Thursday	PM
Just One Thing	Various	Various	AM
Just One Thing - Hesketh Park	Fortnightly	Thursday	PM
Just One Thing - Reading Angels	When Required	Various	AM
LORDY and Me	Various	Wednesday	PM
May Day Musical Theatre	Weekly	Friday	PM
Meditation 2	Weekly	Monday	PM
Meditation 3	Weekly	Wednesday	AM
Modern Movies	When Required	Various	PM
Motorcycling	Second	Thursday	PM
Out and About	Various	Various	AM
Poetry	Fortnightly	Friday	PM
Quiz Night	Occasional	Wednesday	PM
Relaxez Vous	Weekly	Thursday	AM
Russian Language and Culture	Fortnightly	Thursday	AM
Scrabble	Fortnightly	Monday	PM
Singalong	Various	Monday	PM
Southport Flower Show Volunteers	Various	Various	AM
Southport Sketchers	Third	Wednesday	AM
Spanish Conversation	Fortnightly	Wednesday	AM
Spanish Improvers 1	Weekly	Thursday	PM
Sunday Lunch	When Required	Sunday	PM
Table Tennis 1	Weekly	Thursday	PM
Tai Chi 1	Weekly	Thursday	AM
Tenpin Bowling	Second	Tuesday	AM
Ukulele 1 Yooks	Weekly	Tuesday	AM
Ukulele 3	Weekly	Monday	PM
Walking (Short Walks 1)	First + Third	Tuesday	AM
Walking (Short Walks 2)	First + Third	Friday	AM
Walking 4 (WG4)	Weekly	Various	AM
Whist	Fortnightly	Wednesday	AM
Wine Appreciation 4	Fourth	Tuesday	PM
Write On	Fortnightly	Tuesday	PM
Yoga - Early Bird	Weekly	Tuesday	AM
Yoga - Early Bird 2	Weekly	Monday	AM
Yoga 2	Weekly	Tuesday	AM
Yoga 3	Weekly	Monday	AM
Yoga 4	Weekly	Wednesday	PM

At the Christ Church monthly meeting on Thursday 7th May we ran a raffle to raise funds for Phase 2 of our Hesketh Garden project – redevelopment of the circular bed at the Queens Road entrance.

An incredible **£251.15p** was raised – we were blown away by members' generosity.

Thank You

So what happens next? The pictures show the overgrown circular bed has been cleared. We filled 2 x 1 ton bags with weeds and dead plants, and recycled some plants to other areas.

We decided to veer away from the typical Parks and Garden planting scheme. Personally I thought my idea was great until I saw Anne-Marie's plan – a mini village green. WOW certainly different! We will be creatively challenged on some aspects such as a mini post box and a pond!

u3a member Brian Muddiman has made and erected a wooden sign at the front of the border. As you can see it includes a laminated copy of the plan so you can check it out if you visit the park. It has attracted a lot of interest.

Over the next few weeks the area will be transformed thanks to your generosity and a £100 donation from the Marks family legacy.

As the sign says **WATCH THIS SPACE** for further updates.



We hoped to have fun, and boy did we have a great afternoon. This week, 80 members descended on Southport's top leisure attraction, were captured by the music, colour and energy of the rides and certainly let our hair down. Wearing complementary pink wrist bands, we had our choices of adventures and a great deal of senior whooping and laughter resounded. Norman Wallis has transformed the once rather sad Pleasureland into the stunning Adventure Coast, with lovely gardens and great care of detail around the park.

Starting in the Valhalla building, Norman shared how important the bright colourful travelling fairs had been to people in the smog laden industrial towns. How the rides had changed with fashions from horses, motorcycles and cars, then planes, enabling passengers to experience the thrills on ever changing speedways.

We found out how much work was involved in moving these huge cumbersome rides around the country. A fascinating history shared with a passionate business man who has dedicated his life to giving entertainment to all.

We collected £325.00 for Alder Hey Children's Hospital. Thank you all.

The photos on this page and the next illustrate how much fun we had!



u3a
Southport

learn,
laugh,
live



TRAINS, BOATS & PLANES

ANSWERS

- 1 Waterloo.**
- 2 Queenstown (Cobh or Cork).**
- 3 Great Western Railway.**
- 4 Hong Kong.**
- 5 Igor Sikorsky.**
- 6 SS Great Britain.**
- 7 Boeing 747.**
- 8 Ickenham (Metropolitan and Piccadilly) and Island Gardens (DLR).**
- 9 Gondola.**
- 10 Amy Johnson.**
- 11 (May) 1994.**
- 12 A sloop has only one head sail.**
- 13 Mallard.**
- 14 China.**
- 15 QANTAS.**
- 16 Lancaster Bombers.**
- 17 RRS Discovery.**
- 18 Queen Victoria.**
- 19 Formby (Liverpool).**
- 20 Portugal.**