



December 2023

You will find articles later in the newsletter, about our Christ Church Christmas parties. In the meantime, why not watch our videos of the entertainment.



[Drama](#)
[Choir](#)
[Yooks](#)



Apologies but we were unable to film a video of the Banjolele group.

The [Photo 1](#) December meeting was a chance to bring snacks and discuss the 'old photos' submitted over the month. There were lots of interesting photos uploaded, some of which predated even our oldest members.

The Photo 1 challenge for December is 'Evening/Night photography. You can see the results building up in [this gallery](#).



[Walking group 5](#) enjoyed a 13km circular walk from Haigh Hall, taking in Top lock on the Leeds Liverpool canal and Borsdane wood. We also enjoyed one of the few sunny days in that month.



Following the success of last year's panto, our [Drama group](#) are putting on another, on three dates in February - OH NO THEY'RE NOT!

Yes, actually they are and you can find details of both events in the '[Open Events](#)' section of our website.

Don't forget, you need to be logged in to the membership system to access the events (oh yes you do).



This is one of the arrangements the [Floral Art group](#) made, before having coffee and cakes with a view of the Marine Lake, well it is Christmas! We used an Oasis Ring, Fir Twigs, Pine Cones, Sparkley Ribbon and old Bubbles with a Custard Tart Tin Collar.

We meet the second Wednesday of each month, at Lakeside Church, 1.00pm, for a assisted session followed by a demonstration. Classes last about 90 minutes and cost £5. We have vacancies at present and always have fun.

Exercise is good for everybody, but not everybody is able to do aerobics, yoga, or one of the other more common classes. For those people, we have opened a [Chair Based Exercise group](#). Come along and try it.



CHRISTCHURCH PARTIES

Yes, we have had so many people wanting to go to the December Christmas Party at Christ Church that we have had to make them ticket only and run two different parties on consecutive Thursdays to fit everybody into the hall. Here are some pics from the first one.





CHRISTCHURCH PARTIES



The first one was so good we came back for more!!! The second Thursday saw another all ticket Christmas party with the Drama Group and the Choir, but this time with the Yooks. Another great morning was had by all.





CHRISTMAS TV ADVERTS

Can you name the companies currently running these TV adverts??



A



B



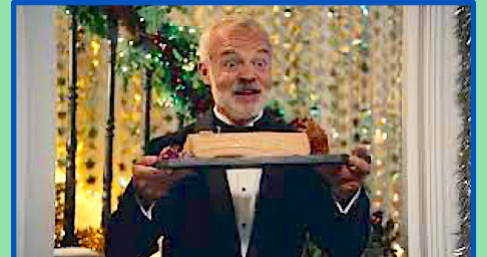
C



D



E



F



G



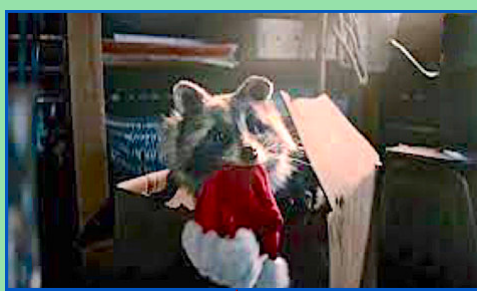
H



I



J



K



L





CHRISTMAS LUNCH AT THE GRAND



170 Southport u3a members packed into The Grand on Lord Street to get the Christmas celebrations off to a great start. Good food, well served, good entertainment, plenty of dancing and terrific organisation from our Events Team ensured that everyone had a great time.

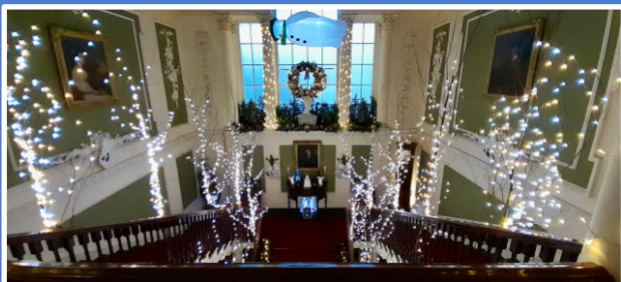




COACH TRIPS CHRISTMAS OUTING



On Friday 8th December the Coach Trips group had its Christmas outing, this year to Lytham Hall, which is reported to be the finest Georgian house in Lancashire. It is a Grade 1 listed building situated in 80 acres of parkland.



Our visit started with a short stop in Lytham Town Centre to have a coffee break and stroll along the High Street. We then made our way to Lytham Hall and our driver 'Big Eric' successfully drove our coach through the narrow gateway with only an inch to spare on either side of the wing mirrors. Thankfully, he had the keen eye of his wife, Linda, to guide him through the opening. On arrival, we were welcomed by the staff to show us our venue for a two course lunch which was in a beautifully decorated room, with a Christmas theme, within the Hall.



Following an excellent lunch we commenced a self directed tour of the Hall. The title for this year's Christmas Spectacular was 'A Not So Silent Night' which featured a musical themed journey from room to room across three floors adorned by magnificent Christmas decorations.



The Georgian mansion was dripping in festive lights, trees and decorations to create a stunning visit for us all to enjoy. The final room at the end of our visit was a model festive village complete with a model railway. (see page below)





THE GREENFLY GANG



Local History Groups 1 and 2 got together and took a nostalgic journey back in time when their speaker, Janice Atfield, evoked many fond memories about life at Greenbank High School and in Southport in the 60's and early 70's. A lot of laughter took place and many fond memories were rekindled as she recounted life as a young teenager growing up in Southport. A really enjoyable light hearted morning.





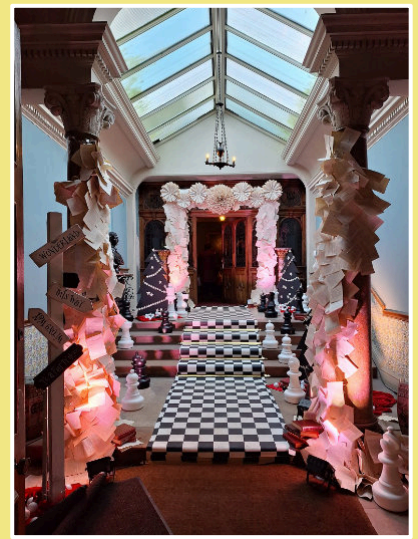
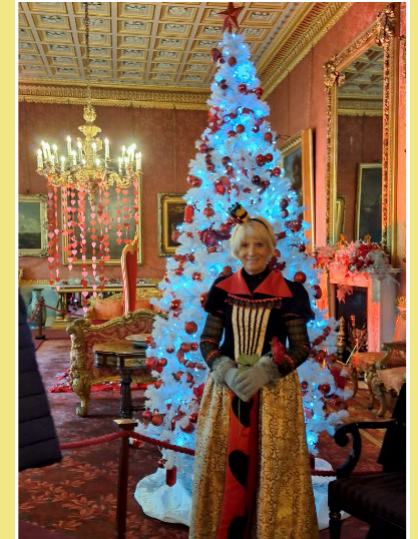
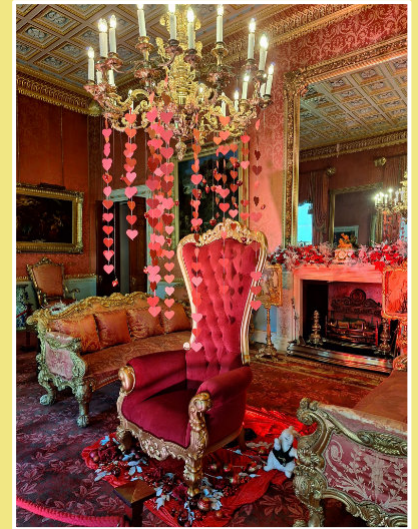
Gardening Group outings seem to always bring out the sunshine and our trip to Tatton Park was no exception, blue skies all

day. However the cold frost gave a sparkling shimmer to the sleeping gardens, the exquisite topiary was wreathed in white and the frozen dew drops added magic to an already very beautiful setting.

The trip was in three parts so plenty to do as Christmas had arrived at Tatton. It was the first day of their, thankfully indoors, Christmas Market with decorations, hand made gifts and much welcomed whisky tasting to warm us up. Dressed up in school uniforms local school children treated us to carols on the stage next to a big Christmas tree - it was all very lovely.

Our trip around the manor was scheduled for 1.00 pm, A very busy day so this still involved queuing but the spectacle inside soon made up for the wait. The Hall had been decorated in the theme of Alice in Wonderland so much that the usual art and antique furniture were incidental to bowyers of flowers, white rabbits and mesmerising wonderland show. We were led along a lit rabbit burrow into the Queens of Hearts palace and colourful themed rooms that were both eery and magical. A great show.

Spectacular as the gardens were during the day the light show structures of small towns, statues and coloured flags suggest the gardens are another wonderland by night. Sadly we left before it got dark but Tatton is certainly doing its best to put on a Christmas show. Full of chocolate and Christmas fayre a good time was had by all.





The [Beginners Bridge Group](#) celebrated our last meeting of 2023 with mince pies and a competition for best & worst score.

There were prizes all round for Sue and Guy Horsley, who managed a stonking 3000+, and another happy pair who had an astonishing zero points.

This group is run by Brenda Jones who is passionate about Bridge and has the patience of a saint. She's taught all of us either how to play from scratch or how to improve our game. Traditionally when members reach a certain standard they move on to the next Bridge group, but we're all having such a lovely time that nobody wants to leave so poor Brenda is stuck with us.

As a thank you we bought her a big box of Christmas goodies, including her favourite wine, so we're hoping we're good for a few more months.

This cheery group does have a few spare places if you fancy joining. Bridge is a fascinating game, if you can count to 13 and once you've mastered the basics you're hooked, and you never stop learning.



learn,
laugh,
live



Despite very mixed weather this week, 10 members of [Walking Group 4](#) braved the elements to enjoy a 7.5 mile walk following The Yellow Hammer Route. Starting in Ormskirk the walk took in country paths and fields encountering the odd giraffe. Lunch was taken enjoying the views from Clieves Hill.



Upon returning to Ormskirk, the group enjoyed warm drinks and cakes at Bramley's Coffee House.

Debbie Baxter
Walk Leader



Remember - if you want to stay up to date with our news, you can sign up to our [Daily Digest](#). It doesn't cost anything and, whenever we add a new item to our News page, you will receive an email alert at 6pm on that day.



CHRISTMAS TV ADVERTS

ANSWERS



A JOHN LEWIS

B ARGOS

C MORRISONS

D SPORTS DIRECT

E AMAZON

F WAITROSE

G BOOTS

H SAINSBURYS

I M&S CLOTHES

J ALDI

K LIDL

L ASDA

GARDENING GROUP CHRISTMAS PARTY

In our new warm and cosy venue at Liverpool Road Methodist Church we decided to have a full on Christmas party.

Eighty members were welcomed with Bingo cards, a quiz and a magnificent buffet of Christmas nibbles. We kicked off with an old fashioned sweetie quiz, followed by thank you gifts for all our helpers, Dorothy and Liz for all the cups of tea and coffee, chocolates for the backup team when they are away.

Next it was eyes down for the Bingo, probably the most bizarre and lengthy Bingo ever, while Diane wrestled with a Bingo ball machine that was reluctant to release the balls and Chris demonstrating each number, with props! There were prizes for each line so luckily we had masses of goodies and everyone could claim a gift. Anyway, despite the mayhem we finally had a winner for the sumptuous hamper as the prize.

Next our fabulous Lady Chairman, Paddy, was to judge our Christmas floral arrangement competition, lots of gorgeous entrees, M&S vouchers for prizes, the winners are pictured here.

Then it was 'Pass the Parcel', five huge parcels with a gift in each wrapping were passed around to Christmas music, many happy members went home with a gift.

Finally it was time to mark the gardening quiz, somehow the members had found time to fill in the answers, Lisa & Jessica read out the questions and answers, the winner



was Judith Foster after the tie breaker question. It seems our party was a success and we may do it again next year.

Merry Christmas everyone, from the Gardening Group.